

STATE OF NORTH CAROLINA
DEPARTMENT OF TRANSPORTATION
HIGHWAY DIVISION 6

PLANS

Letting Date: December 15, 2021

CONTRACT ID: DF00299

TIP NO.: -----

FEDERAL AID NO.: STATE FUNDED

WBS ELEMENT NO.: 2022CPT.06.11.10092.1, ETC.

ROUTE NO.: VARIOUS PRIMARY & SR

LOCATION: VARIOUS

COUNTY: DIVISION 6 - BLADEN, COLUMBUS, CUMBERLAND, HARNETT & ROBESON

TYPE OF WORK: PERMANENT RAISED PAVEMENT MARKER INSTALLATIONS

LENGTH OF PROJECT: 1353.78 MILES

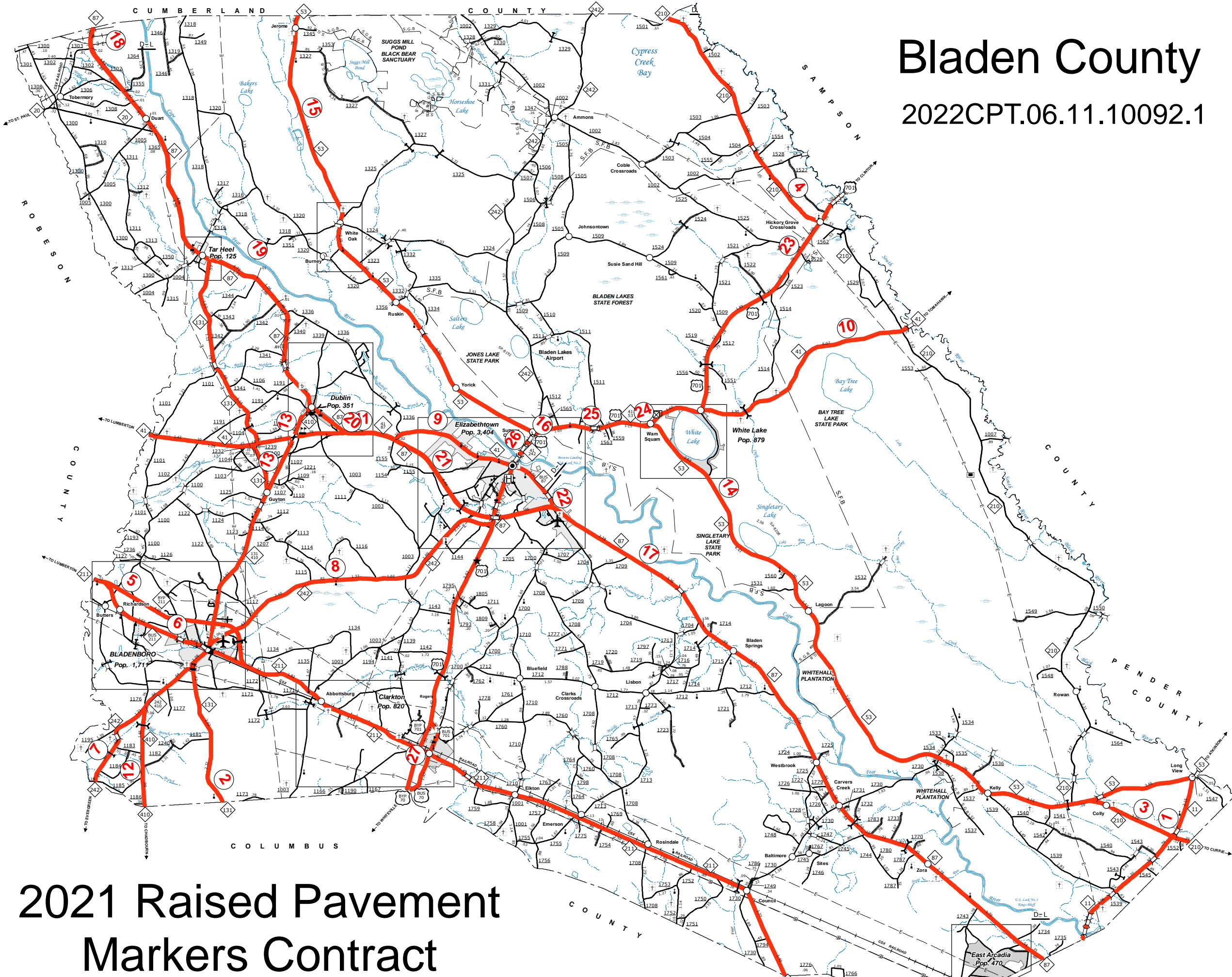
**This electronic collection of documents is provided
for the convenience of the user
and is Not a Certified Document –**

**The documents contained herein were originally issued
and sealed by the individuals whose names and license
numbers appear on each page, on the dates appearing
with their signature on that page.**

**This file or an individual page
shall not be considered a certified document.**

Bladen County

2022CPT.06.11.10092.1



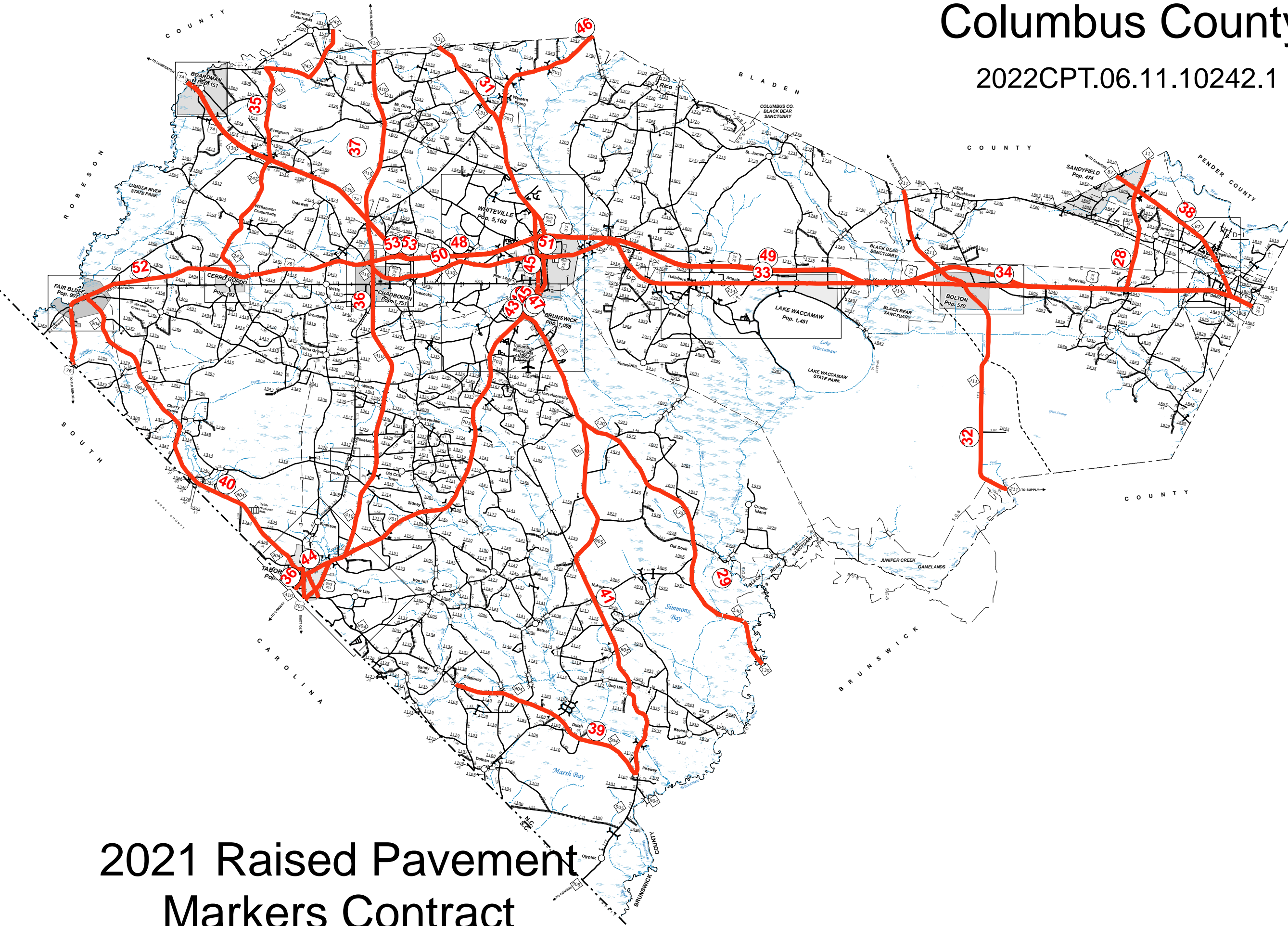
2021 Raised Pavement Markers Contract

LEGEND

- UNPAVED SURFACED ROAD
- HARD SURFACED ROAD
- NS NON-SYSTEM ROADS
- DIVIDED HIGHWAY W/FRONTAGE ROADS
- PROJECTED LOCATION
- BLUE RIDGE PARKWAY
- INTERSECTION DISTANCE
- TRAFFIC CIRCLE
- DETAILED HIGHWAY INTERCHANGE
- HIGHWAY BRIDGE
- RAILROAD BRIDGE
- DRAW SPAN ON BRIDGE
- PEDESTRIAN BRIDGE
- PEDESTRIAN WALKWAY
- PEDESTRIAN UNDERPASS
- VEHICULAR UNDERPASS
- FORD
- TUNNEL
- CULVERT
- PIPE
- 440 INTERSTATE HIGHWAY
- 401 U.S. NUMBERED HIGHWAY
- 55 N.C. NUMBERED HIGHWAY
- U.S. NUMBERED BICYCLE ROUTE
- 50 N.C. NUMBERED BICYCLE ROUTE
- 445 INTERSTATE INTERCHANGE NUMBER
- SECONDARY ROAD NUMBER
- 8888 UTILITY LINES
- RAILROAD
- RAILROAD STATION
- GRADE CROSSING
- INSET AREA
- N.F.B. NATIONAL FOREST BOUNDARY
- R.P.B. RESERVATION OR PARK BOUNDARY
- S.F.B. STATE FOREST BOUNDARY
- S.G.B. STATE GAMLAND BOUNDARY
- F.G.B. FEDERAL GAMLAND BOUNDARY
- M.R.B. MILITARY RESERVATION BOUNDARY
- STATE LINE
- COUNTY LINE
- CITY LIMIT
- FERRY ROUTE
- NARROW CREEK OR STREAM
- WIDE RIVER OR CREEK
- RESERVOIR, POND OR LAKE W/ ISLAND
- DAM OR DAM WITH LOCK
- WATERFALL
- SWAMP
- COMMUNITY, TOWN OR CITY CENTER
- COUNTY SEAT
- STATE CAPITAL
- SCHOOL
- COLLEGE OR UNIVERSITY
- HOSPITAL
- COAST GUARD STATION
- CHURCH
- CHURCH WITH CEMETERY
- CEMETERY
- PATROL STATION
- CORRECTION OR PENAL INSTITUTION
- QUARRY
- MINE OR PIT
- HIGHWAY GARAGE OR MAINT. YARD
- HIGHWAY DIV. OR DIST. OFFICE
- MILITARY POST
- WILDLIFE REFUGE
- WEIGH STATION
- FAIRGROUNDS
- HISTORICAL SITE
- POINTS OF INTEREST
- STATE FOREST
- LIGHTHOUSE
- MOUNTAIN SUMMIT
- OVERLOOK
- GEODETIC MARKER
- REST AREA
- VISITOR CTR/REST AREA
- WELCOME CTR/REST AREA
- AIRPORT
- MILITARY AIRPORT
- HELIPORT

Columbus County

2022CPT.06.11.10242.1

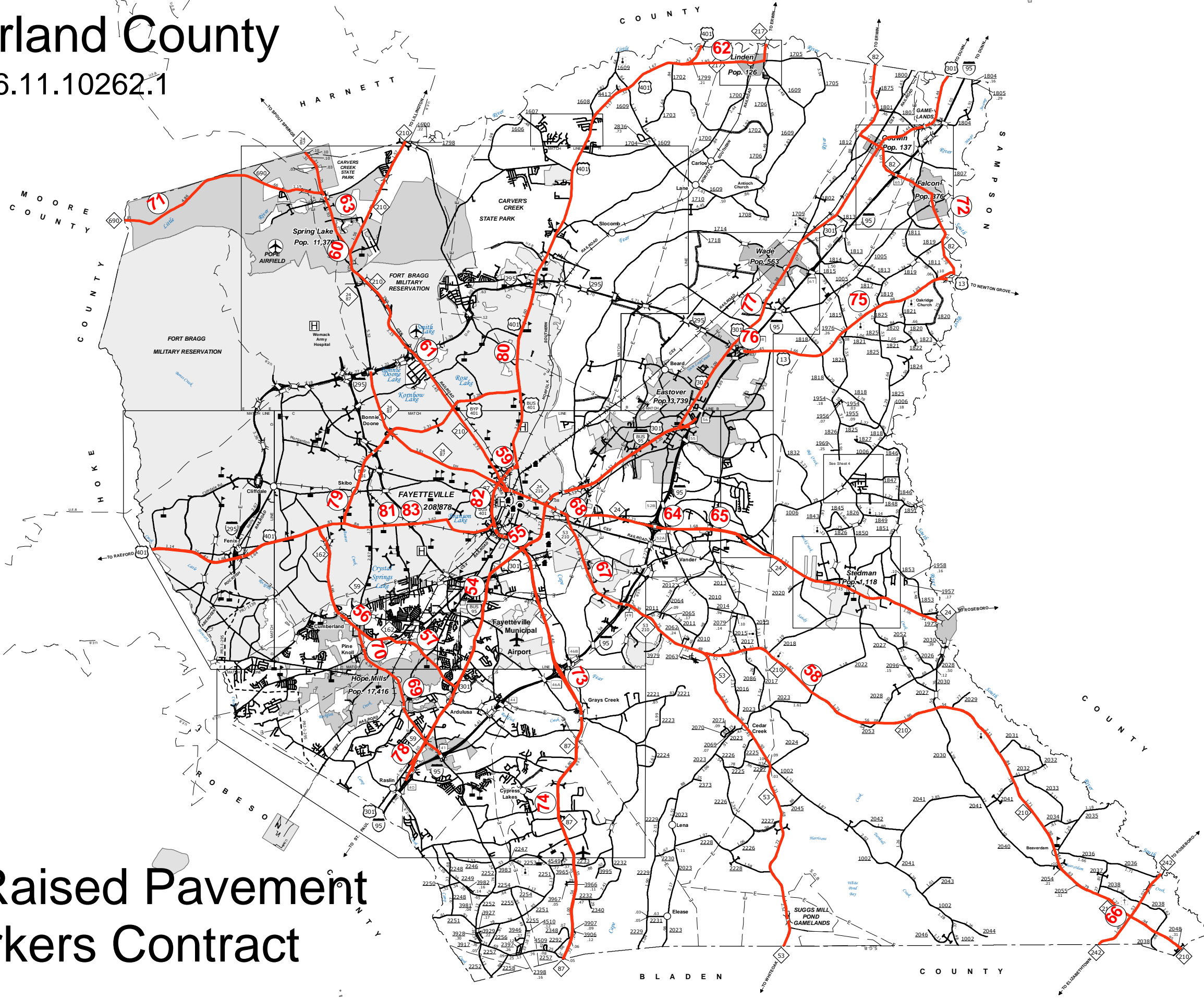


- ### LEGEND
- UNPAVED SURFACED ROAD
 - HARD SURFACED ROAD
 - NON-SYSTEM ROADS
 - DIVIDED HIGHWAY W/FRONTAGE ROADS
 - PROJECTED LOCATION
 - BLUE RIDGE PARKWAY
 - INTERSECTION DISTANCE
 - TRAFFIC CIRCLE
 - DETAILED HIGHWAY INTERCHANGE
 - HIGHWAY BRIDGE
 - RAILROAD BRIDGE
 - DRAW SPAN ON BRIDGE
 - PEDESTRIAN BRIDGE
 - PEDESTRIAN WALKWAY
 - PEDESTRIAN UNDERPASS
 - VEHICULAR UNDERPASS
 - FORD
 - TUNNEL
 - CULVERT
 - PIPE
 - INTERSTATE HIGHWAY
 - U.S. NUMBERED HIGHWAY
 - N.C. NUMBERED HIGHWAY
 - U.S. NUMBERED BICYCLE ROUTE
 - N.C. NUMBERED BICYCLE ROUTE
 - INTERSTATE INTERCHANGE NUMBER
 - SECONDARY ROAD NUMBER
 - UTILITY LINES
 - RAILROAD
 - RAILROAD STATION
 - GRADE CROSSING
 - INSET AREA
 - NATIONAL FOREST BOUNDARY
 - RESERVATION OR PARK BOUNDARY
 - STATE FOREST BOUNDARY
 - STATE GAMLAND BOUNDARY
 - FEDERAL GAMLAND BOUNDARY
 - MILITARY RESERVATION BOUNDARY
 - STATE LINE
 - COUNTY LINE
 - CITY LIMIT
 - FERRY ROUTE
 - NARROW CREEK OR STREAM
 - WIDE RIVER OR CREEK
 - RESERVOIR, POND OR LAKE W/ ISLAND
 - DAM OR DAM WITH LOCK
 - WATERFALL
 - SWAMP
 - COMMUNITY, TOWN OR CITY CENTER
 - COUNTY SEAT
 - STATE CAPITAL
 - SCHOOL
 - COLLEGE OR UNIVERSITY
 - HOSPITAL
 - COAST GUARD STATION
 - CHURCH
 - CHURCH WITH CEMETERY
 - CEMETERY
 - PATROL STATION
 - CORRECTION OR PENAL INSTITUTION
 - QUARRY
 - MINE OR PIT
 - HIGHWAY GARAGE OR MAINT. YARD
 - HIGHWAY DIV. OR DIST. OFFICE
 - MILITARY POST
 - WILDLIFE REFUGE
 - WEIGH STATION
 - FAIRGROUNDS
 - HISTORICAL SITE
 - POINTS OF INTEREST
 - STATE FOREST
 - LIGHTHOUSE
 - MOUNTAIN SUMMIT
 - OVERLOOK
 - GEODETIC MARKER
 - REST AREA
 - VISITOR CTR/REST AREA
 - WELCOME CTR/REST AREA
 - AIRPORT
 - MILITARY AIRPORT
 - HELIPORT

2021 Raised Pavement Markers Contract

Cumberland County

2022CPT.06.11.10262.1

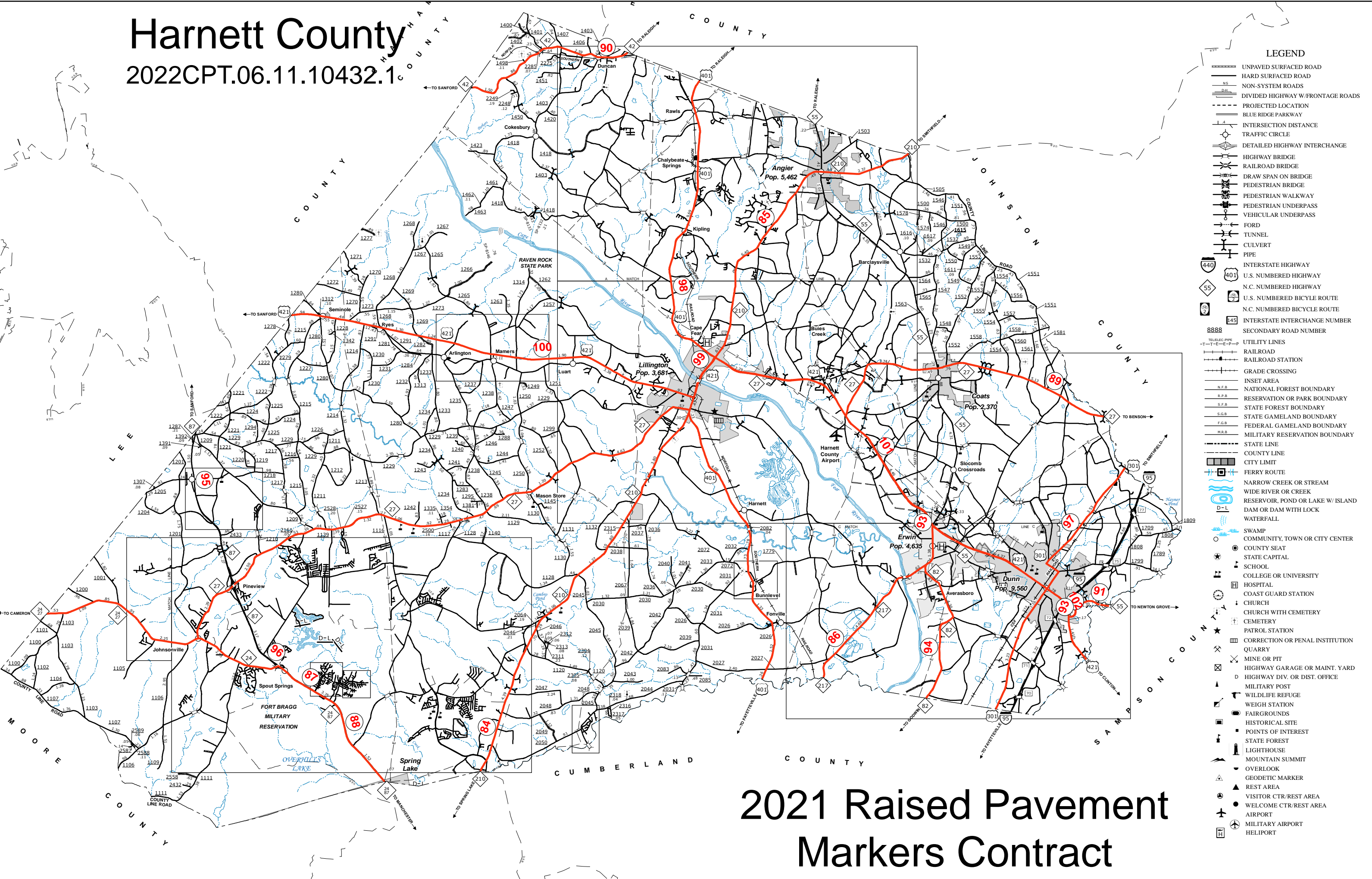


- ### LEGEND
- UNPAVED SURFACED ROAD
 - HARD SURFACED ROAD
 - NON-SYSTEM ROADS
 - DIVIDED HIGHWAY W/FRONTAGE ROADS
 - PROJECTED LOCATION
 - BLUE RIDGE PARKWAY
 - INTERSECTION DISTANCE
 - TRAFFIC CIRCLE
 - DETAILED HIGHWAY INTERCHANGE
 - HIGHWAY BRIDGE
 - RAILROAD BRIDGE
 - DRAW SPAN ON BRIDGE
 - PEDESTRIAN BRIDGE
 - PEDESTRIAN WALKWAY
 - PEDESTRIAN UNDERPASS
 - VEHICULAR UNDERPASS
 - FORD
 - TUNNEL
 - CULVERT
 - PIPE
 - INTERSTATE HIGHWAY
 - U.S. NUMBERED HIGHWAY
 - N.C. NUMBERED HIGHWAY
 - U.S. NUMBERED BICYCLE ROUTE
 - N.C. NUMBERED BICYCLE ROUTE
 - INTERSTATE INTERCHANGE NUMBER
 - SECONDARY ROAD NUMBER
 - UTILITY LINES
 - RAILROAD
 - RAILROAD STATION
 - GRADE CROSSING
 - INSET AREA
 - NATIONAL FOREST BOUNDARY
 - RESERVATION OR PARK BOUNDARY
 - STATE FOREST BOUNDARY
 - STATE GAMLAND BOUNDARY
 - FEDERAL GAMLAND BOUNDARY
 - MILITARY RESERVATION BOUNDARY
 - STATE LINE
 - COUNTY LINE
 - CITY LIMIT
 - FERRY ROUTE
 - NARROW CREEK OR STREAM
 - WIDE RIVER OR CREEK
 - RESERVOIR, POND OR LAKE W/ ISLAND
 - DAM OR DAM WITH LOCK
 - WATERFALL
 - SWAMP
 - COMMUNITY, TOWN OR CITY CENTER
 - COUNTY SEAT
 - STATE CAPITAL
 - SCHOOL
 - COLLEGE OR UNIVERSITY
 - HOSPITAL
 - COAST GUARD STATION
 - CHURCH
 - CHURCH WITH CEMETERY
 - CEMETERY
 - PATROL STATION
 - CORRECTION OR PENAL INSTITUTION
 - QUARRY
 - MINE OR PIT
 - HIGHWAY GARAGE OR MAINT. YARD
 - HIGHWAY DIV. OR DIST. OFFICE
 - MILITARY POST
 - WILDLIFE REFUGE
 - WEIGH STATION
 - FAIRGROUNDS
 - HISTORICAL SITE
 - POINTS OF INTEREST
 - STATE FOREST
 - LIGHTHOUSE
 - MOUNTAIN SUMMIT
 - OVERLOOK
 - GEODETIC MARKER
 - REST AREA
 - VISITOR CTR/REST AREA
 - WELCOME CTR/REST AREA
 - AIRPORT
 - MILITARY AIRPORT
 - HELIPORT

2021 Raised Pavement Markers Contract

Harnett County

2022CPT.06.11.10432.1



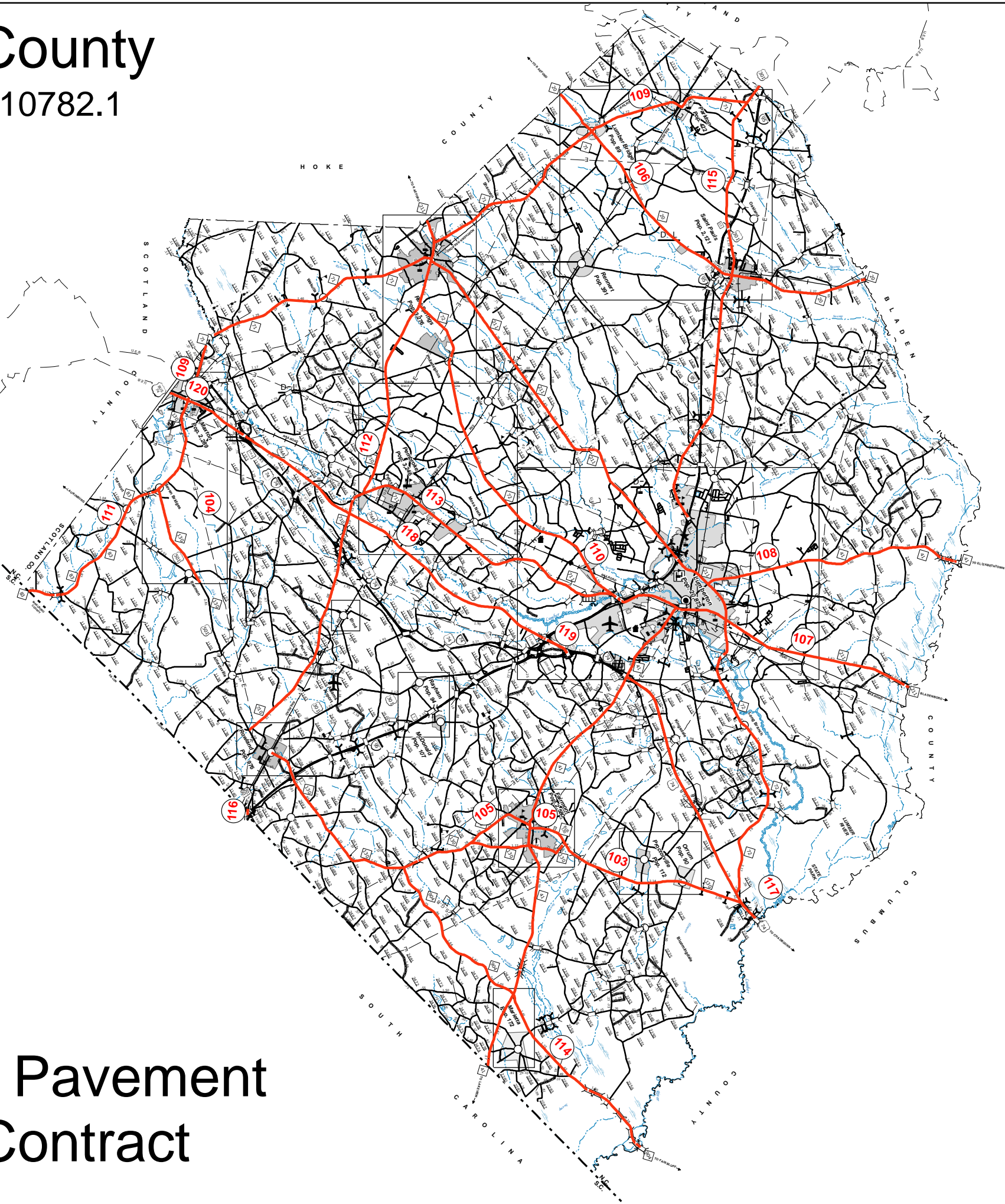
- ### LEGEND
- UNPAVED SURFACED ROAD
 - HARD SURFACED ROAD
 - NON-SYSTEM ROADS
 - DIVIDED HIGHWAY W/FRONTAGE ROADS
 - PROJECTED LOCATION
 - BLUE RIDGE PARKWAY
 - INTERSECTION DISTANCE
 - TRAFFIC CIRCLE
 - DETAILED HIGHWAY INTERCHANGE
 - HIGHWAY BRIDGE
 - RAILROAD BRIDGE
 - DRAW SPAN ON BRIDGE
 - PEDESTRIAN BRIDGE
 - PEDESTRIAN WALKWAY
 - PEDESTRIAN UNDERPASS
 - VEHICULAR UNDERPASS
 - FORD
 - TUNNEL
 - CULVERT
 - PIPE
 - INTERSTATE HIGHWAY
 - U.S. NUMBERED HIGHWAY
 - N.C. NUMBERED HIGHWAY
 - U.S. NUMBERED BICYCLE ROUTE
 - N.C. NUMBERED BICYCLE ROUTE
 - INTERSTATE INTERCHANGE NUMBER
 - SECONDARY ROAD NUMBER
 - UTILITY LINES
 - RAILROAD
 - RAILROAD STATION
 - GRADE CROSSING
 - INSET AREA
 - N.F.B. NATIONAL FOREST BOUNDARY
 - R.P.B. RESERVATION OR PARK BOUNDARY
 - S.F.B. STATE FOREST BOUNDARY
 - S.G.B. STATE GAMLAND BOUNDARY
 - F.G.B. FEDERAL GAMLAND BOUNDARY
 - M.R.B. MILITARY RESERVATION BOUNDARY
 - STATE LINE
 - COUNTY LINE
 - CITY LIMIT
 - FERRY ROUTE
 - NARROW CREEK OR STREAM
 - WIDE RIVER OR CREEK
 - RESERVOIR, POND OR LAKE W/ ISLAND
 - DAM OR DAM WITH LOCK
 - WATERFALL
 - SWAMP
 - COMMUNITY, TOWN OR CITY CENTER
 - COUNTY SEAT
 - STATE CAPITAL
 - SCHOOL
 - COLLEGE OR UNIVERSITY
 - HOSPITAL
 - COAST GUARD STATION
 - CHURCH
 - CHURCH WITH CEMETERY
 - CEMETERY
 - PATROL STATION
 - CORRECTION OR PENAL INSTITUTION
 - QUARRY
 - MINE OR PIT
 - HIGHWAY GARAGE OR MAINT. YARD
 - HIGHWAY DIV. OR DIST. OFFICE
 - MILITARY POST
 - WILDLIFE REFUGE
 - WEIGH STATION
 - FAIRGROUNDS
 - HISTORICAL SITE
 - POINTS OF INTEREST
 - STATE FOREST
 - LIGHTHOUSE
 - MOUNTAIN SUMMIT
 - OVERLOOK
 - GEODETIC MARKER
 - REST AREA
 - VISITOR CTR/REST AREA
 - WELCOME CTR/REST AREA
 - AIRPORT
 - MILITARY AIRPORT
 - HELIPORT

2021 Raised Pavement Markers Contract

Robeson County

2022CPT.06.11.10782.1

2021 Raised Pavement Markers Contract



- ### LEGEND
- UNPAVED SURFACED ROAD
 - HARD SURFACED ROAD
 - NON-SYSTEM ROADS
 - DIVIDED HIGHWAY W/FRONTAGE ROADS
 - PROJECTED LOCATION
 - BLUE RIDGE PARKWAY
 - INTERSECTION DISTANCE
 - TRAFFIC CIRCLE
 - DETAILED HIGHWAY INTERCHANGE
 - HIGHWAY BRIDGE
 - RAILROAD BRIDGE
 - DRAW SPAN ON BRIDGE
 - PEDESTRIAN BRIDGE
 - PEDESTRIAN WALKWAY
 - PEDESTRIAN UNDERPASS
 - VEHICULAR UNDERPASS
 - FORD
 - TUNNEL
 - CULVERT
 - PIPE
 - INTERSTATE HIGHWAY
 - U.S. NUMBERED HIGHWAY
 - N.C. NUMBERED HIGHWAY
 - U.S. NUMBERED BICYCLE ROUTE
 - N.C. NUMBERED BICYCLE ROUTE
 - INTERSTATE INTERCHANGE NUMBER
 - SECONDARY ROAD NUMBER
 - UTILITY LINES
 - RAILROAD
 - RAILROAD STATION
 - GRADE CROSSING
 - INSET AREA
 - NATIONAL FOREST BOUNDARY
 - RESERVATION OR PARK BOUNDARY
 - STATE FOREST BOUNDARY
 - STATE GAMELAND BOUNDARY
 - FEDERAL GAMELAND BOUNDARY
 - MILITARY RESERVATION BOUNDARY
 - STATE LINE
 - COUNTY LINE
 - CITY LIMIT
 - FERRY ROUTE
 - NARROW CREEK OR STREAM
 - WIDE RIVER OR CREEK
 - RESERVOIR, POND OR LAKE W/ ISLAND
 - DAM OR DAM WITH LOCK
 - WATERFALL
 - SWAMP
 - COMMUNITY, TOWN OR CITY CENTER
 - COUNTY SEAT
 - STATE CAPITAL
 - SCHOOL
 - COLLEGE OR UNIVERSITY
 - HOSPITAL
 - COAST GUARD STATION
 - CHURCH
 - CHURCH WITH CEMETERY
 - CEMETERY
 - PATROL STATION
 - CORRECTION OR PENAL INSTITUTION
 - QUARRY
 - MINE OR PIT
 - HIGHWAY GARAGE OR MAINT. YARD
 - HIGHWAY DIV. OR DIST. OFFICE
 - MILITARY POST
 - WILDLIFE REFUGE
 - WEIGH STATION
 - FAIRGROUNDS
 - HISTORICAL SITE
 - POINTS OF INTEREST
 - STATE FOREST
 - LIGHTHOUSE
 - MOUNTAIN SUMMIT
 - OVERLOOK
 - GEODETIC MARKER
 - REST AREA
 - VISITOR CTR/REST AREA
 - WELCOME CTR/REST AREA
 - AIRPORT
 - MILITARY AIRPORT
 - HELIPORT

SCHEDULE OF QUANTITIES

CONTRACT NO.: DF00299
ROUTE: Various Primary

WBS NO.: 2022CPT.06.11.10092.1, etc.
DATE: 11/9/2021

PROJECT: Permanent Raised Pavement Markers

COUNTY: Bladen, Columbus,
 Cumberland, Harnett &
 Robeson

Map	County	Route	From	To	Length	Quantity	Quantity
					(MI.)	Y/Y	C/R
1	Bladen	NC 11	COLUMBUS CL	SR 1547	7.030	13	475
2	Bladen	NC 131	COLUMBUS CL	NC 87	20.302	0	1,356
3	Bladen	NC 210	PENDER CL	NC 53	3.710	6	245
4	Bladen	NC 210	US 701	CUMBERLAND CL	8.911	0	590
5	Bladen	NC 211	COLUMBUS CL	ROBESON CL	28.495	250	2,017
6	Bladen	NC 211 BUS	NC 211	NC 211	5.780	0	390
7	Bladen	NC 242	COLUMBUS CL	NC 131	5.553	34	340
8	Bladen	NC 242	NC 131	US 701	11.247	34	775
9	Bladen	NC 41	ROBESON CL	US 701	12.849	232	4,891
10	Bladen	NC 41	US 701	SAMPSON CL	8.232	0	5,414
11	Bladen	NC 41	NC 87 BYP	NC 87 @ DUBLIN	1.840	15	123
12	Bladen	NC 410	COLUMBUS CL	NC 242	3.458	0	240
13	Bladen	NC 410	NC 131	NC 87	3.301	0	220
14	Bladen	NC 53	NC 11	US 701 SOUTH	25.688	30	1,720
15	Bladen	NC 53	US 701 SOUTH	CUMBERLAND CL	17.650	7	1,165
16	Bladen	NC 53	US 701 SOUTH	US 701	0.013	25	20
17	Bladen	NC 87	COLUMBUS CL	CUMBERLAND CL	48.923	3,528	0
18	Bladen	NC 87	CUMBERLAND CL	NC 87	8.474	0	755
19	Bladen	NC 87	NC 87	NC 87	5.259	0	425
20	Bladen	NC 87	NC 87	NC 41	0.064	0	30
21	Bladen	NC 87	NC 87 BUS	NC 87 BUS	6.630	544	0
22	Bladen	NC 87 BUS	NC 87 SOUTH	US 701	2.058	35	0
23	Bladen	US 701	COLUMBUS CL	SAMPSON CL	28.076	585	2,367
24	Bladen	US 701	US 701	US 701	0.440	0	460
25	Bladen	US 701	US 701	US 701	0.486	2	8
26	Bladen	US 701	US 701	US 701	1.471	40	0
27	Bladen	US 701 BUS	COLUMBUS CL	US 701	2.688	155	276
28	Columbus	NC 11	US 74	BLADEN CL	5.539	0	365
29	Columbus	NC 130	BRUNSWICK CL	US 701	18.748	235	1,505
30	Columbus	NC 130	US 701 S	NC 130	0.269	60	0
31	Columbus	NC 131	US 701	BLADEN CL	4.169	0	900
32	Columbus	NC 211	BRUNSWICK CL	BLADEN CL	14.448	140	1,000
33	Columbus	NC 214	US 74 BUS	US 74	17.911	120	1,110
34	Columbus	NC 214	US 74 W	NC 214	1.240	100	0
35	Columbus	NC 242	US 76	BLADEN CL	13.613	25	910
36	Columbus	NC 410	DEAD END	US 74 BUS	14.973	65	1,080
37	Columbus	NC 410	US 74 W	BLADEN CL	7.174	24	490
38	Columbus	NC 87	US 74 W	BLADEN CL	7.013	60	560
39	Columbus	NC 904	BRIDGE 44	NC 905	8.620	0	570
40	Columbus	NC904	ROBESON CL	SR 1305	17.330	75	1,150
41	Columbus	NC 905	NC 904	NC 130	15.850	0	1,050
42	Columbus	US 701	US 701 S	BLADEN CL	30.345	1,000	2,415
43	Columbus	US 701	US 701	US 701	0.411	210	390
44	Columbus	US 701 BUS	US 701 BUS S	US 701	2.124	40	200

Map	County	Route	From	To	Length	Quantity	Quantity
					(MI.)	Y/Y	C/R
45	Columbus	US 701 BUS	US 701	US 701	4.704	23	0
46	Columbus	US 701 BUS	US 701	BLADEN CL	0.220	0	20
47	Columbus	US 701 BUS	US 701 BUS S	US 701 BUS	0.106	27	0
48	Columbus	US 74	ROBESON CL	BRUNSWICK CL	47.382	4,160	25
49	Columbus	US 74	BRUNSWICK CL	ROBESON CL	47.384	4,215	25
50	Columbus	US 74 BUS	US 74	US 74 W	12.139	475	1,040
51	Columbus	US 74 BUS	US 74 BUS	US 74 BUS	0.080	0	0
52	Columbus	US 76	US 76 W	US 74	16.619	190	1,185
53	Columbus	US 76	US 74	US 76	0.712	35	10
54	Cumberland	I 95 BUS	I-95 N	I-95 S	15.074	5,332	75
55	Cumberland	I 95 BUS	I-95 S	I-95 N	15.728	2,001	8
56	Cumberland	NC 162	US 401	NC 162 W	7.457	2,258	100
57	Cumberland	NC 162	NC 162	US 401	6.092	809	100
58	Cumberland	NC 210	BLADEN CL	NC 53	19.679	0	1,300
59	Cumberland	NC 210	NC 210 S	HARNETT CL	13.157	1,600	982
60	Cumberland	NC 210	NC 87	NC 210	25.824	1,333	0
61	Cumberland	NC 210	NC 24	NC 210	0.349	23	0
62	Cumberland	NC 217	US 401	HARNETT CL	3.180	0	209
63	Cumberland	NC 24	HARNETT CL	NC 87 S	7.526	1,406	2,160
64	Cumberland	NC 24	NC 295 S	SAMPSON CL	20.767	3,068	83
65	Cumberland	NC 24	NC 24	NC 87	1.931	167	0
66	Cumberland	NC 242	BLADEN CL	CUMBERLAND CL	3.056	0	200
67	Cumberland	NC 53	BLADEN CL	NC 210	16.885	734	1,455
68	Cumberland	NC 53	NC 24	NC 53	0.166	0	1
69	Cumberland	NC 59	I-95 S	NC 162	4.942	585	490
70	Cumberland	NC 59	NC 59	NC 59	0.338	42	0
71	Cumberland	NC 690	MOORE CL	NC 24	6.880	45	470
72	Cumberland	NC 82	US 13	HARNETT CL	8.919	0	590
73	Cumberland	NC 87	BLADEN CL	US 401 BUS	15.014	1,800	0
74	Cumberland	NC 87	US 401 BUS	BLADEN CL	15.010	1,789	0
75	Cumberland	US 13	I-95	SAMPSON CL	7.280	102	579
76	Cumberland	US 13	I-95	US 13	0.365	24	0
77	Cumberland	US 301	I-95 BUS	HARNETT CL	14.544	116	708
78	Cumberland	US 301	I-95 BUS S	US 301	0.290	40	5
79	Cumberland	US 401	HOKE CL	HARNETT CL	27.696	5,182	1,540
80	Cumberland	US 401	I-295	HOKE CL	17.992	2,724	75
81	Cumberland	US 401 BUS	US 401	US 401	9.654	3,126	770
82	Cumberland	US 401 BUS	US 401 BUS	NC 87	2.108	335	0
83	Cumberland	US 401 BUS	US 401 BUS	US 401 BUS	0.200	62	11
84	Harnett	NC 210	CUMBERLAND CL	US 401	14.059	675	1,450
85	Harnett	NC 210	US 401	JOHNSTON CL	10.611	200	870
86	Harnett	NC 217	CUMBERLAND CL	NC 82	5.282	30	395
87	Harnett	NC 24	MOORE CL	CUMBERLAND CL	14.004	1,000	700
88	Harnett	NC 24	CUMBERLAND CL	NC 24	5.501	960	0
89	Harnett	NC 27	NC 24	JOHNSTON CL	36.836	275	2,550
90	Harnett	NC 42	CHATHAM CL	WAKE CL	5.998	10	420
91	Harnett	NC 55	SAMPSON CL	NC 217/NC 82/US 421	7.295	120	475
92	Harnett	NC 55	NC 27	WAKE CL	9.505	155	620
93	Harnett	NC 55	US 421	NC 55	6.189	40	0

Map	County	Route	From	To	Length	Quantity	Quantity	
					(MI.)	Y/Y	C/R	
94	Harnett	NC 82	CUMBERLAND CL	US 421 S	6.507	145	475	
95	Harnett	NC 87	NC 24 W	LEE CL	8.606	1,150	315	
96	Harnett	NC 87	NC 87	NC 24	6.229	655	30	
97	Harnett	US 301	CUMBERLAND CL	JOHNSTON CL	9.703	200	795	
98	Harnett	US 401	CUMBERLAND CL	WAKE CL	22.093	715	1,585	
99	Harnett	US 401	US 401	US 401	1.384	360	50	
100	Harnett	US 421	SAMPSON CL	LEE CL	32.306	2,300	1,700	
101	Harnett	US 421	US 421	US 421	12.676	565	125	
102	Harnett	US 421	US 421	US 421	0.439	35	30	
103	Robeson	NC 130	US 74 W	US 301	21.777	70	1,525	
104	Robeson	NC 130	US 501	US 74 BUS	7.96	20	545	
105	Robeson	NC 130 BUS	NC 130	NC 130	4.49	0	300	
106	Robeson	NC 20	HOKE CL	BLADEN CL	15.38	435	1,155	
107	Robeson	NC 211	BLADEN CL	HOKE CL	28.124	1,125	2,175	
108	Robeson	NC 41	SC LINE	BLADEN CL	34.195	1,500	3,000	
109	Robeson	NC 71	US 74 BUS	US 301	27.135	400	2,000	
110	Robeson	NC 72	US 74	NC 211	32.952	115	850	
111	Robeson	NC 83	DEAD END	NC 130	7.28	0	500	
112	Robeson	NC 710	US 501	NC 72	18.619	205	1,325	
113	Robeson	NC 711	NC 710	NC 72	11.19	600	1,050	
114	Robeson	NC 904	NC 130	COLUMBUS CL	14.922	0	995	
115	Robeson	US 301	I-95 S	CUMBERLAND CL	17.91	425	1,375	
116	Robeson	US 301	US 301	US 501 S	0.239	25	0	
117	Robeson	US 74	COLUMBUS CL	NC 41	10.893	1,975	0	
118	Robeson	US 74 ALT	I-74 W	I-74	15.413	525	1,250	
119	Robeson	US 74 ALT	I-74 W	I-95	0.881	75	35	
120	Robeson	US 74 BUS	SCOTLAND CL	US 74	3.343	65	275	
					SUBTOTAL		68,667	83,153
					TOTAL	1353.780	151,820	